



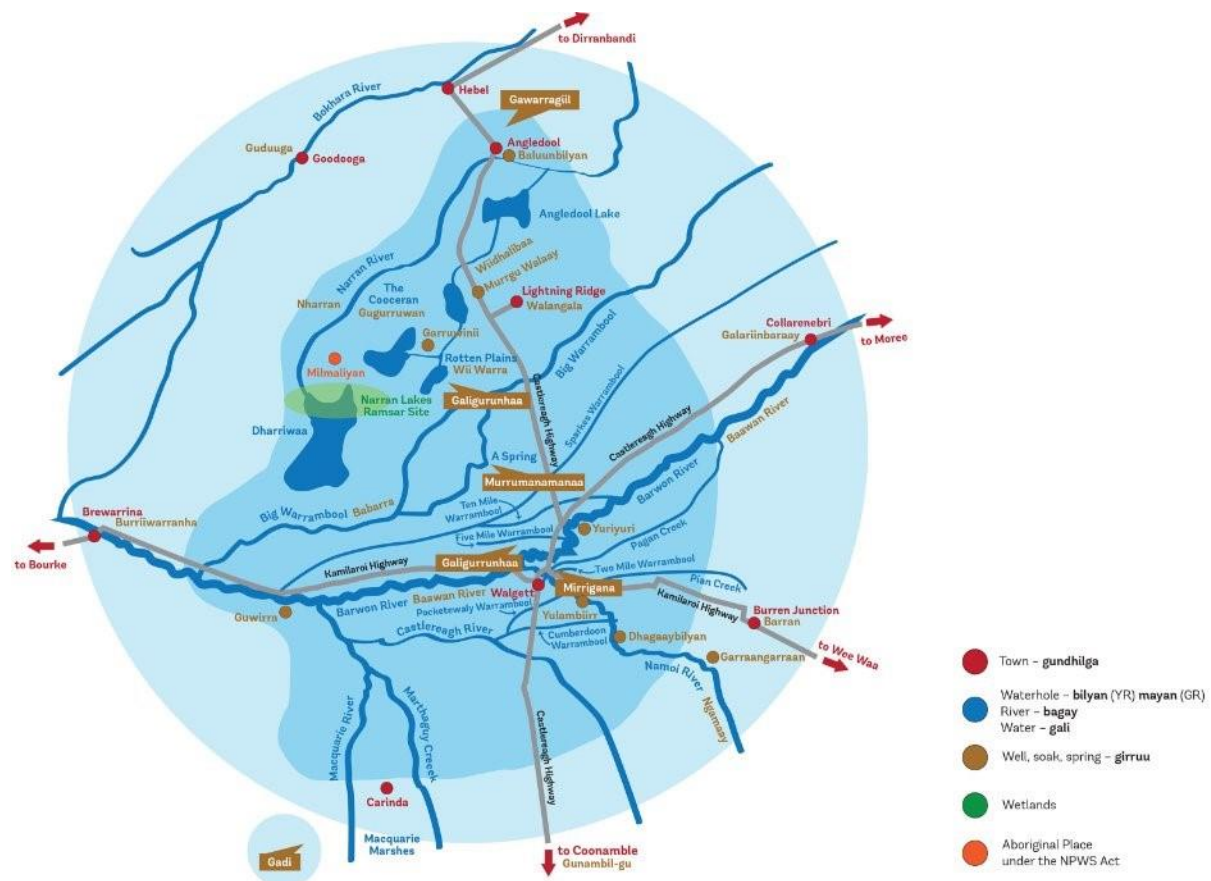
Weekly Water Monitoring Report

9th May 2024

Introduction

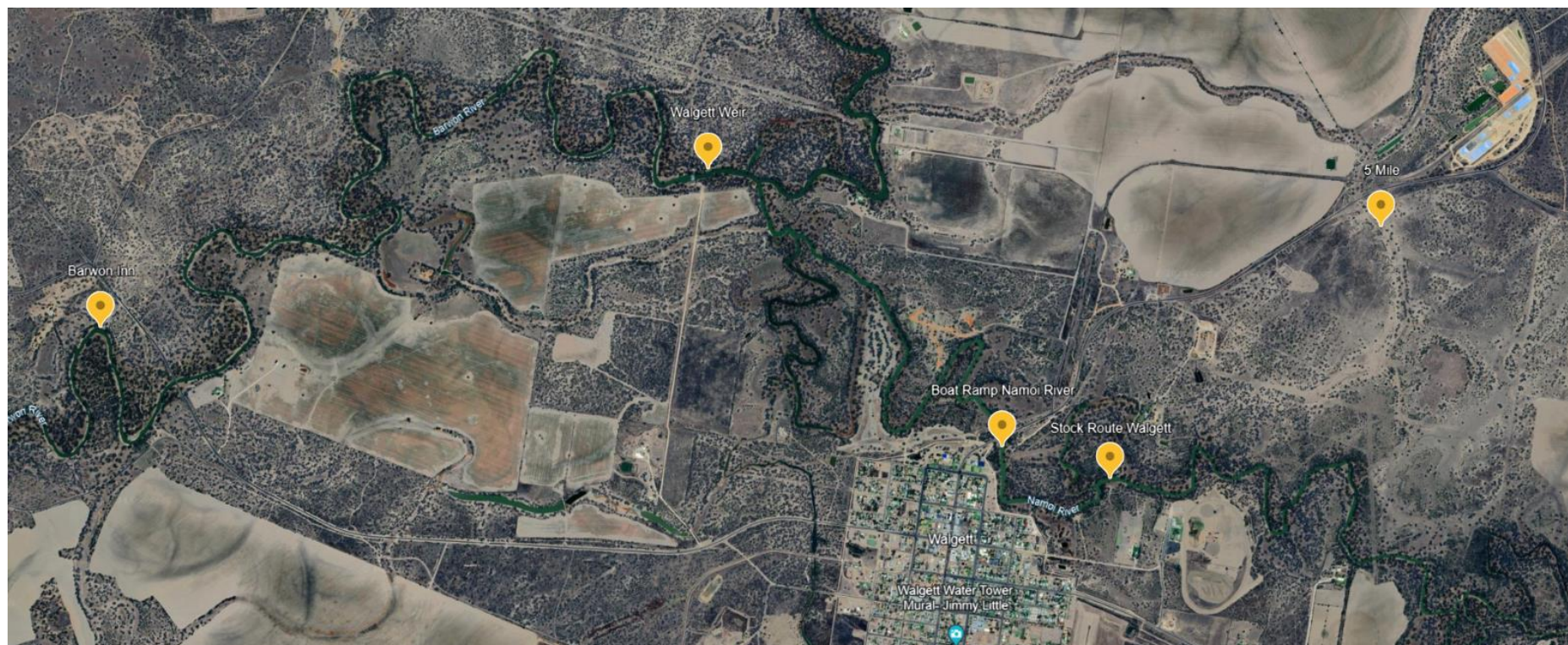
This data was collected on Thursday 9th May between 10am and 1pm on the Ngamaay (Namoi) and Baawan (Barwon) River.

The Dharriwaa Elders Group River Rangers are conducting weekly water quality testing, measuring a range of factors that affect the quality of the river water. Different results affect the health of native animals and plants, and the health of the people that rely on the river for food and water.

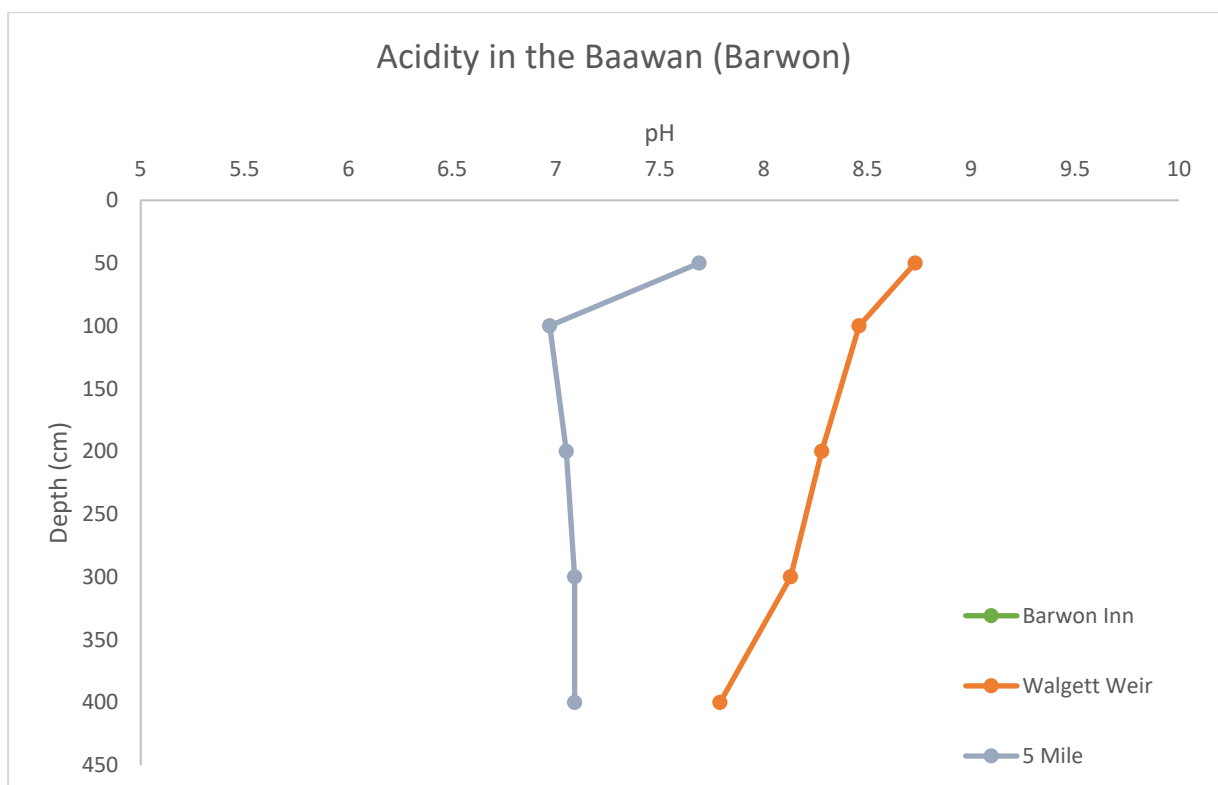
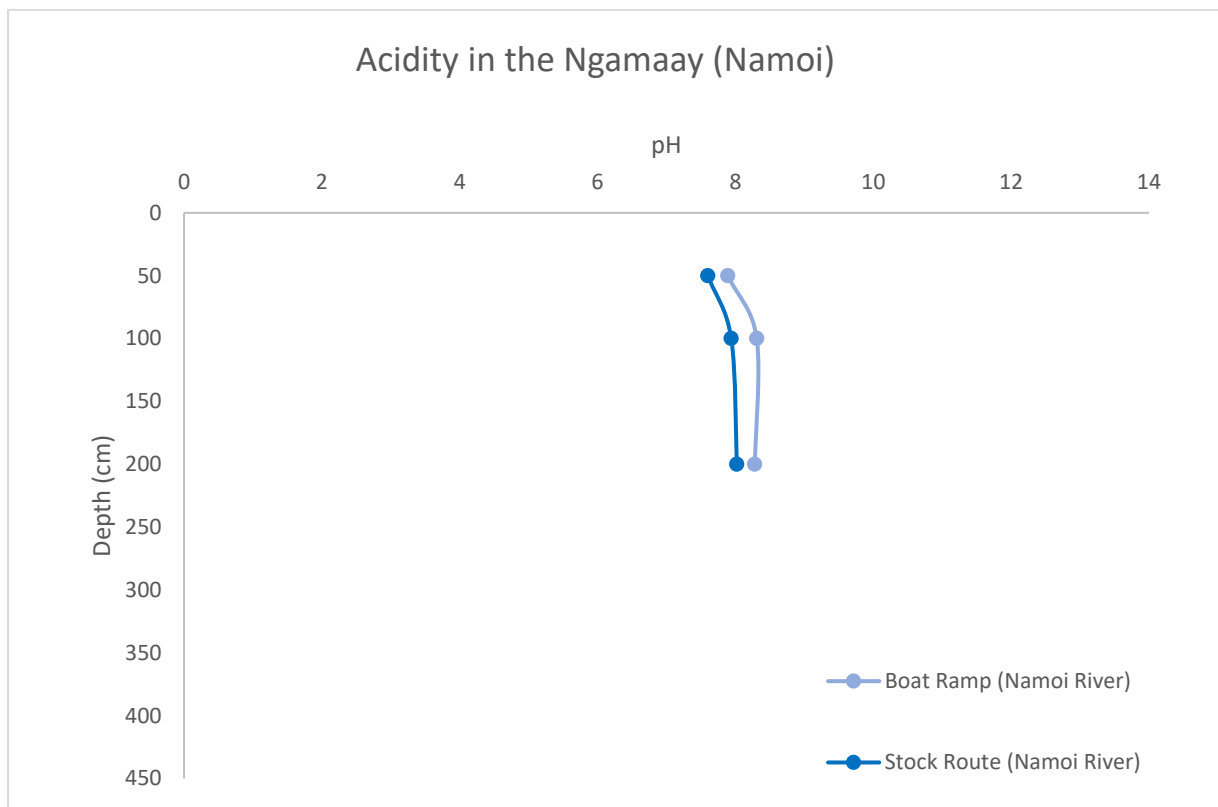


(Picture: Dharriwaa Elders Group area of interest)

Picture: Map of the Baawan (Barwon) River and Ngamaay (Namoi) River where the DEG River Rangers do their water quality monitoring.



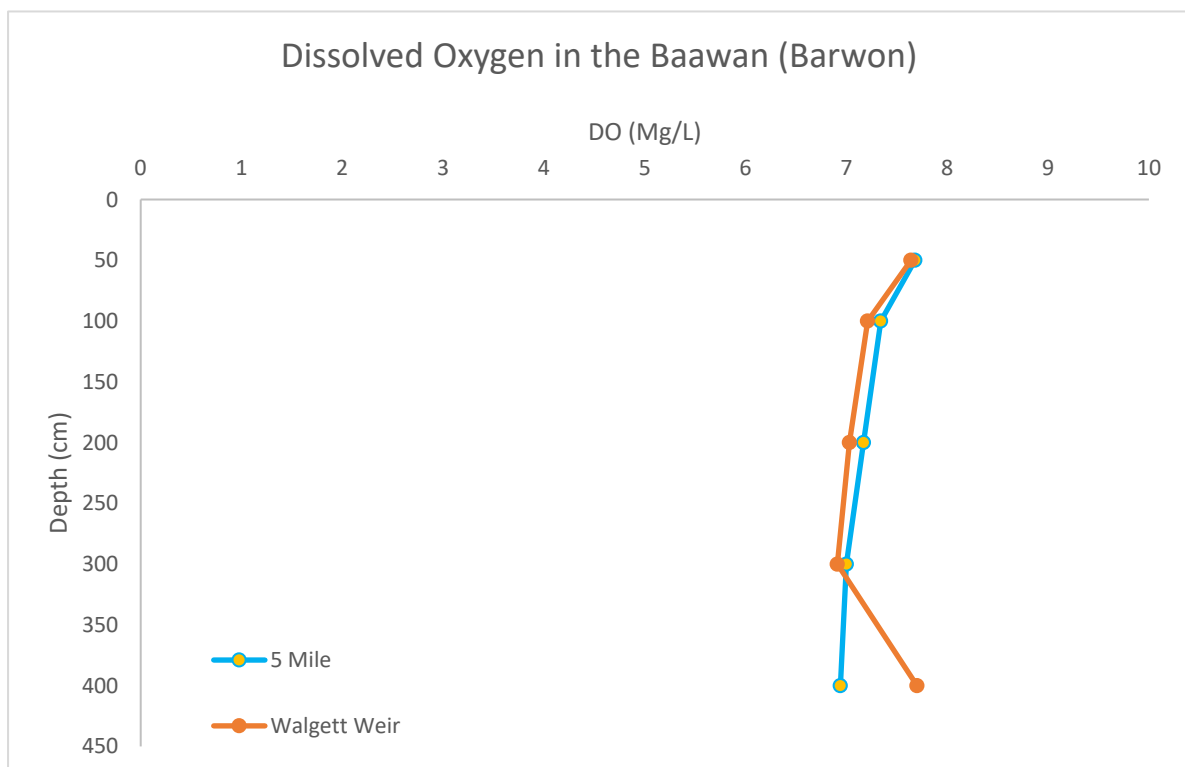
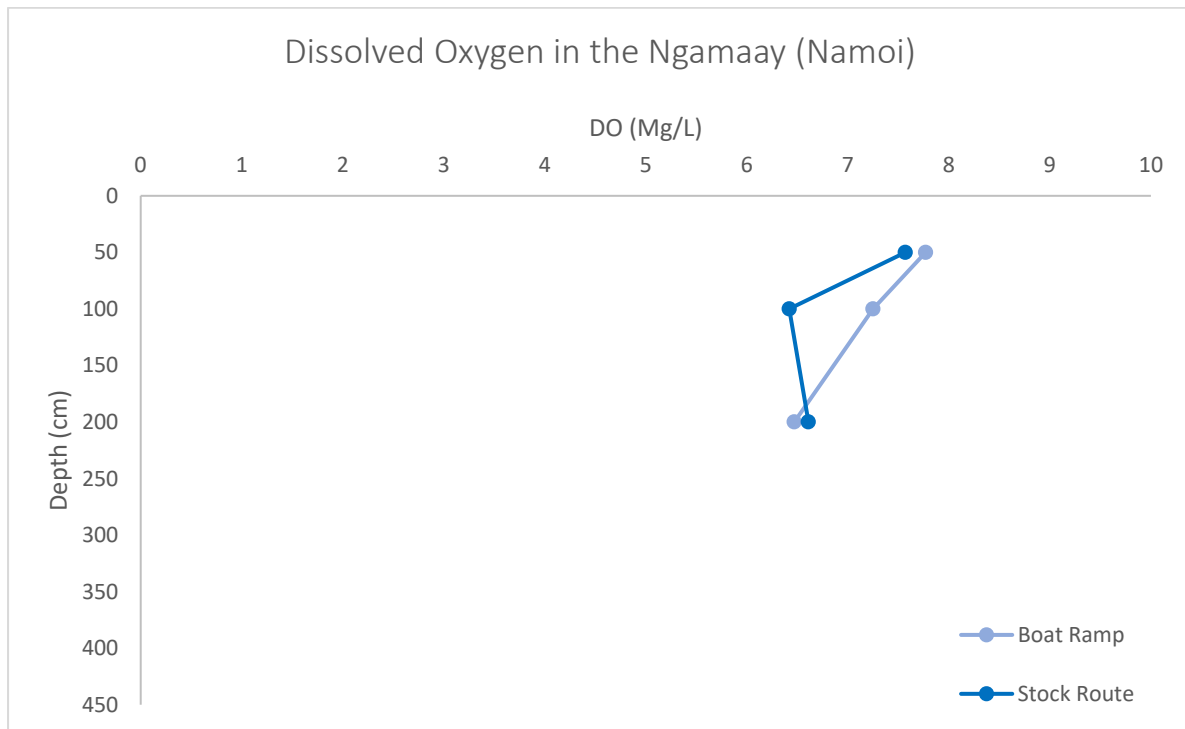
Acidity (pH) in the Ngamaay and Baawan Rivers



The pH measured at each depth at each site is within a healthy range.

Healthy Range: 6.5 – 8.5 pH

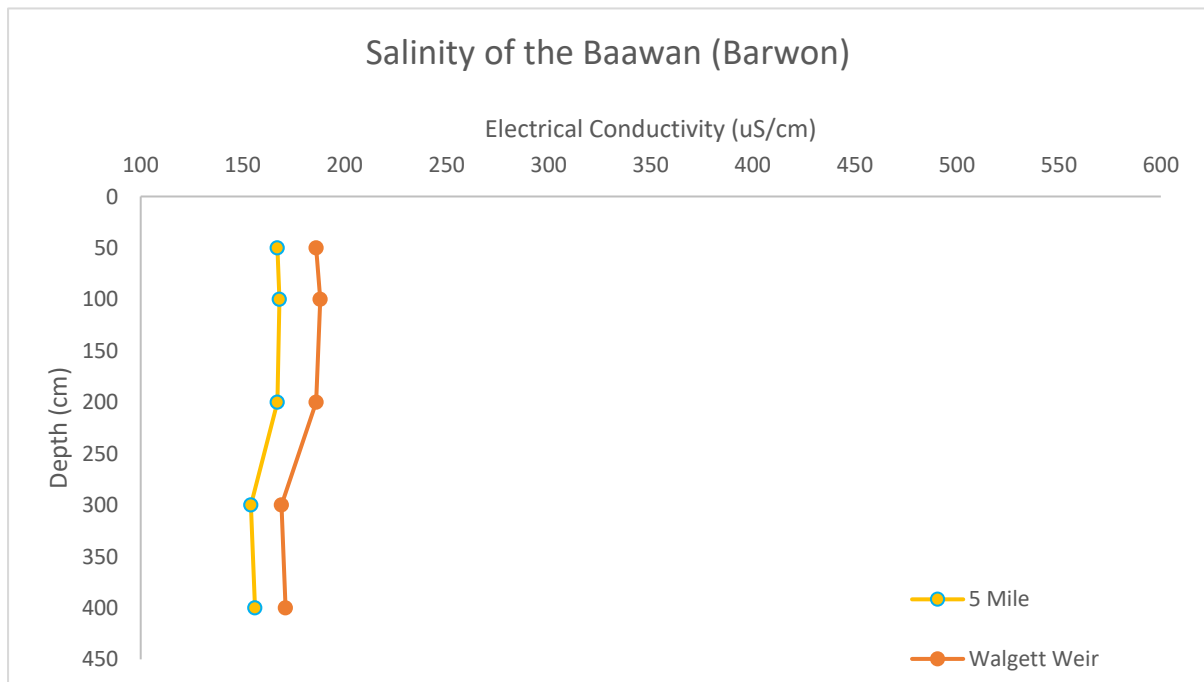
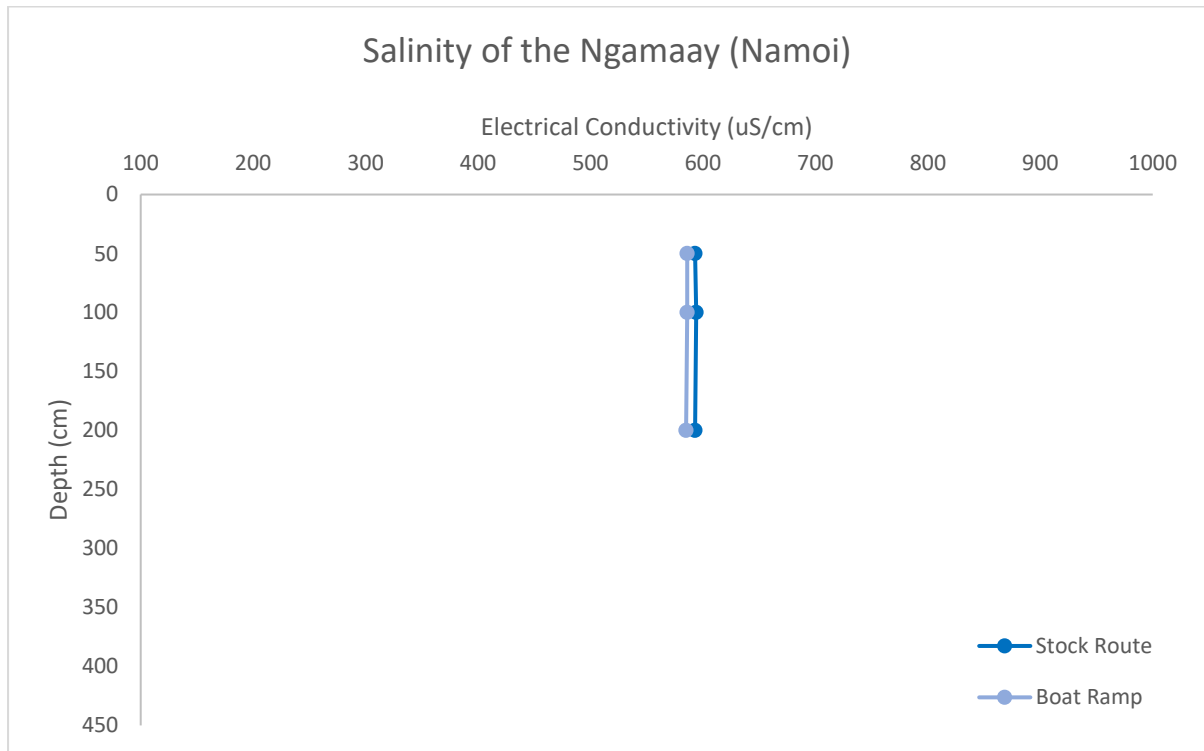
Dissolved Oxygen in the Ngamaay and Baawan River



The dissolved oxygen (mg/L) measured at each depth at each site is within the healthy range. This is good for the fish within the Ngamaay and Baawan Rivers.

Healthy Range: 6 – 8 (mg/L)

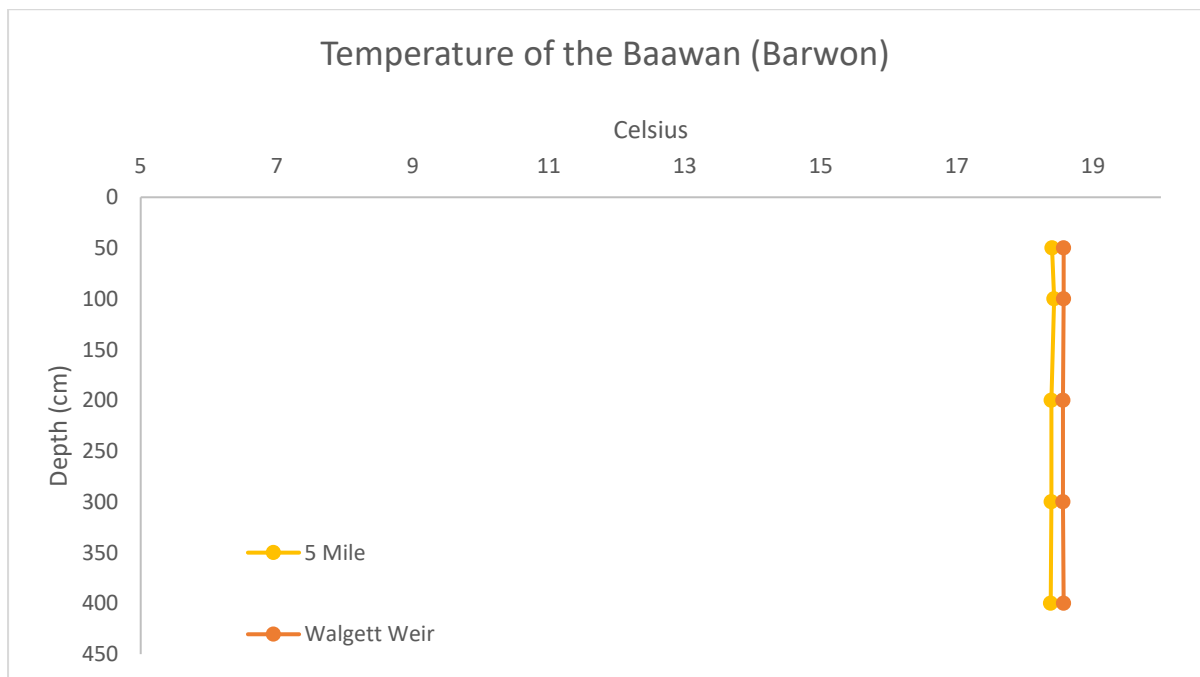
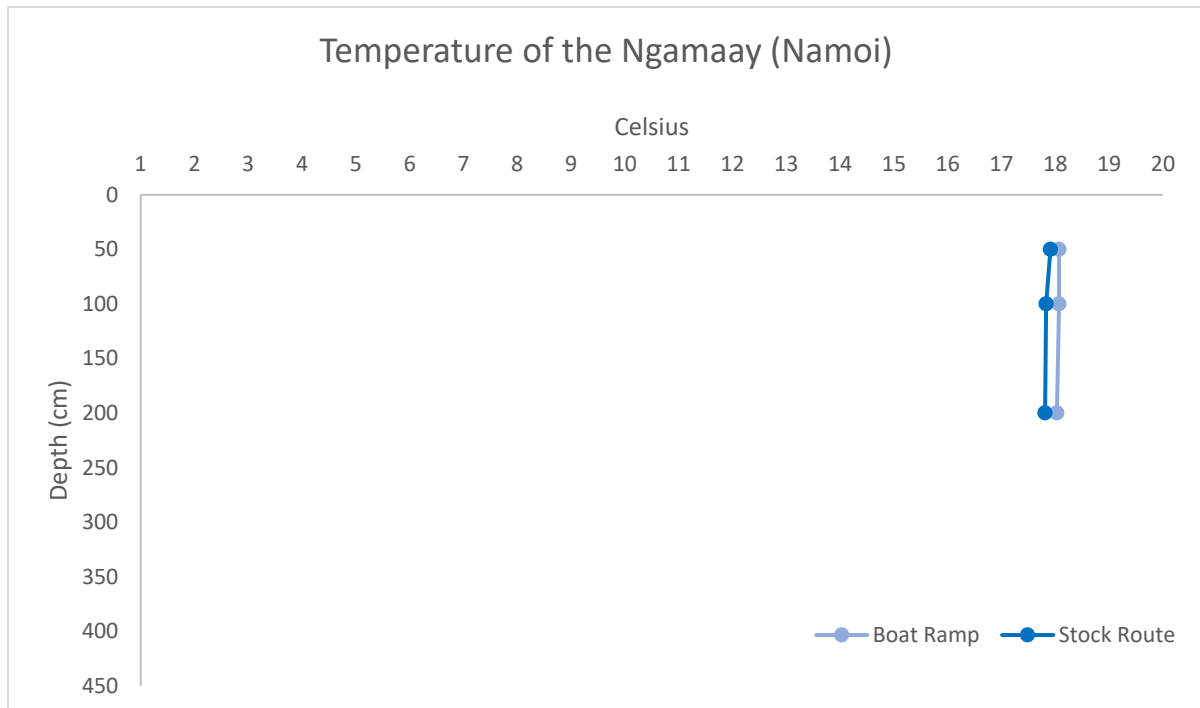
Salinity (Electrical Conductivity) in the Ngamaay and Baawan River



The electrical conductivity (EC) is the measurement of the salinity (salt) in the water. The EC measured at all sites at all depths is within a healthy range. This is good for freshwater fish.

Healthy Range: 125 – 2,200 uS/cm

Temperature in the Ngamaay and Baawan River



The temperatures measured at the 5 Mile, Walgett Weir and the Boat Ramp are all within a healthy range. The temperature measured at the Stock Route on the Ngamaay River is outside the healthy range but there is no danger to the fish within the river.

Healthy Range: 18 – 28 degrees (Celsius)

Conclusion

The pH, dissolved oxygen, electrical conductivity are all within the healthy range. The temperature measured at the Stock Route was outside the healthy range but there is no danger to the fish. The temperature measured at all other sites at each depth are all within a healthy range.