



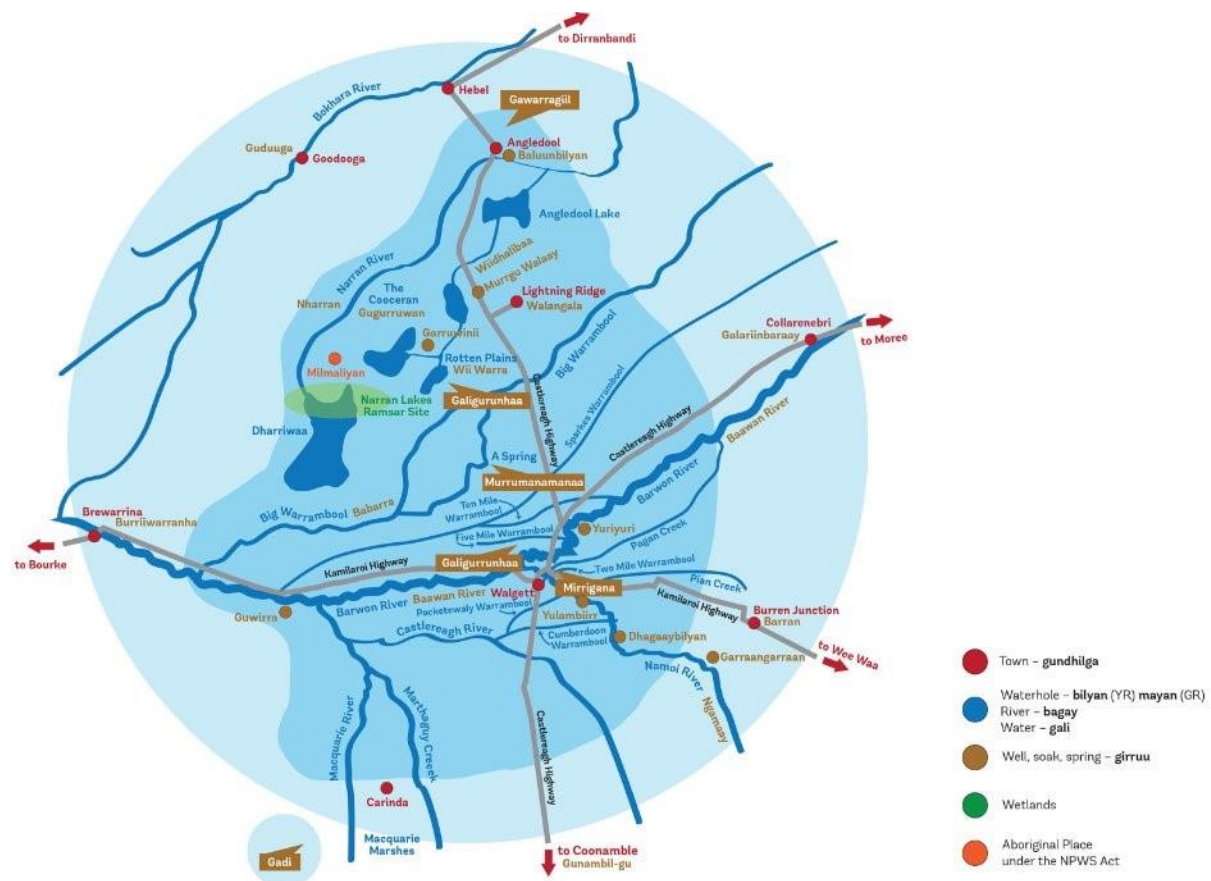
Weekly River Monitoring Report

11th June 2024

Introduction

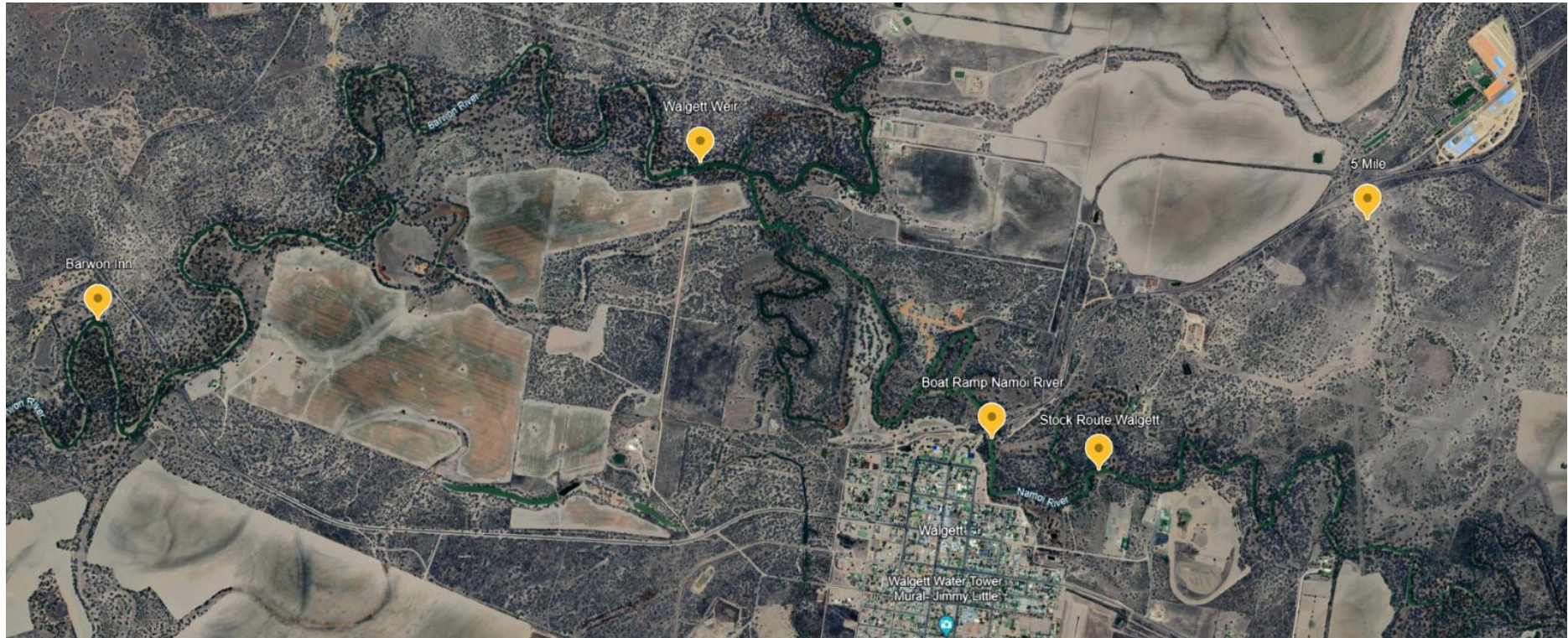
This data was collected on Tuesday 11th June 2024 between 10am and 1pm on the Ngamaay (Namoi) and Baawan (Barwon) River.

The Dharriwaa Elders Group River Rangers are conducting weekly water quality testing, measuring a range of factors that affect the quality of the river water. Different results affect the health of native animals and plants, and the health of the people that rely on the river for food and water.

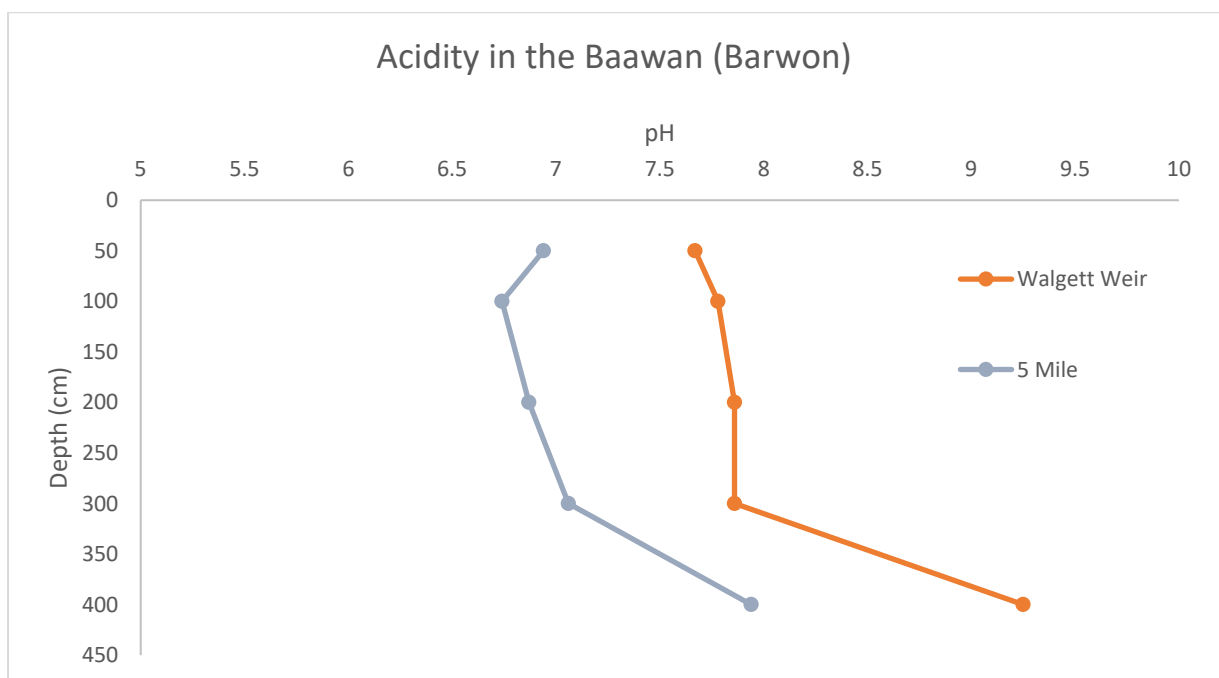
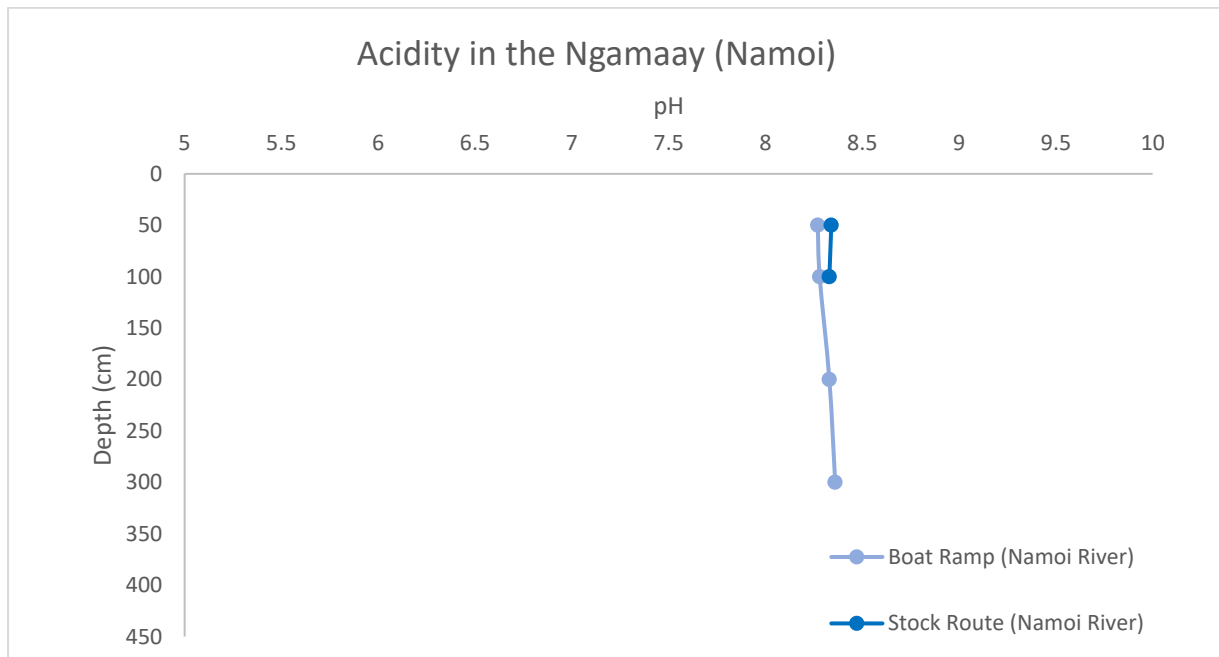


(Picture: Dharriwaa Elders Group area of interest)

Picture: Map of the Baawan (Barwon) River and Ngamaay (Namoi) River where the DEG River Rangers do their water quality monitoring.



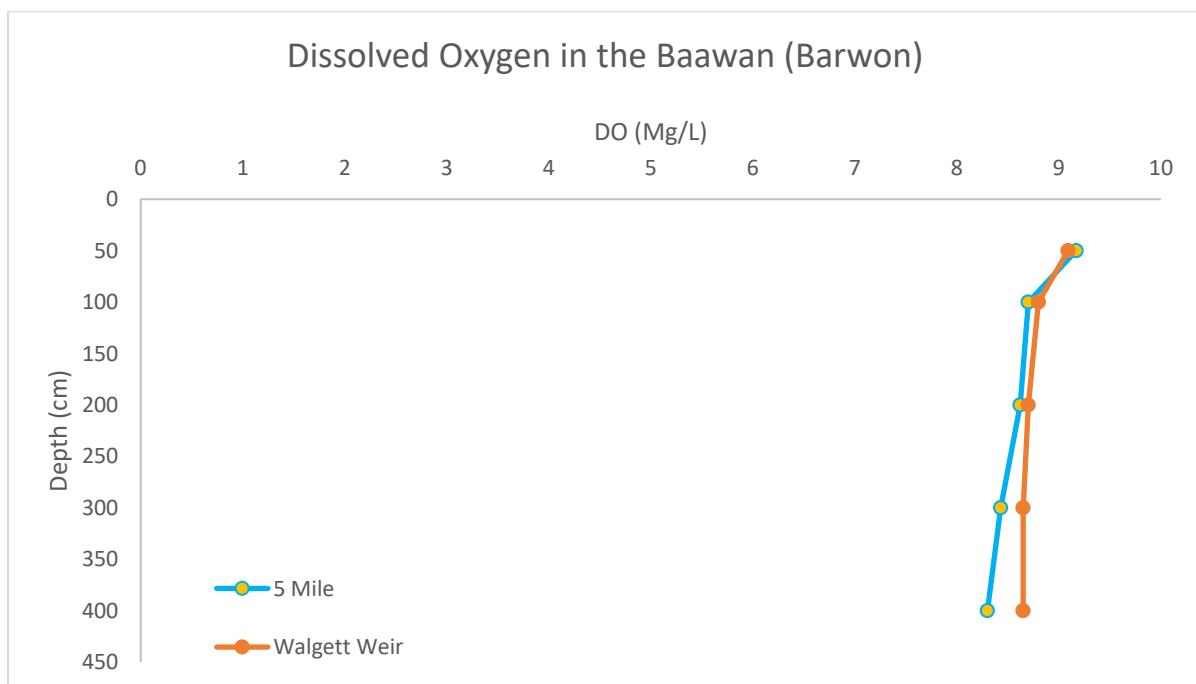
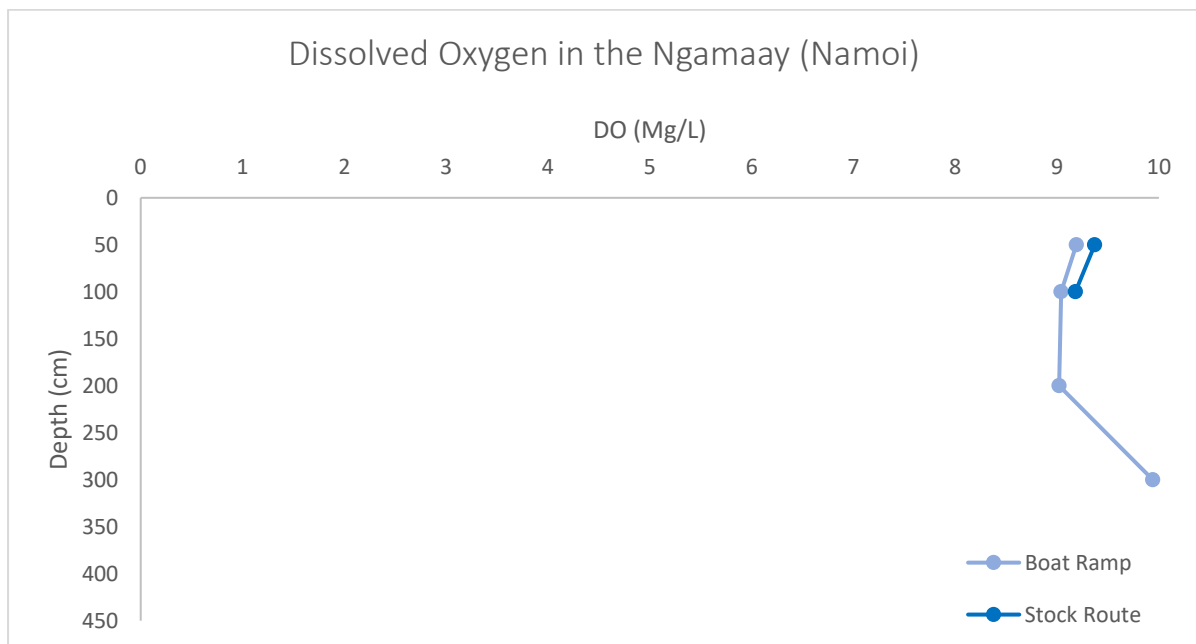
Acidity in the Ngamaay and Baawan Rivers



The pH measured at the Boat Ramp, Stock Route (Ngamaay River) and 5 Mile (Baawan River) is within the healthy range. The first four pH readings at the Walgett Weir are within the healthy range but the last reading is outside the healthy range on the alkaline side. The minimum reading is 6.74 and the maximum reading is 9.2.

Healthy range: 6.5 - 8.5 pH

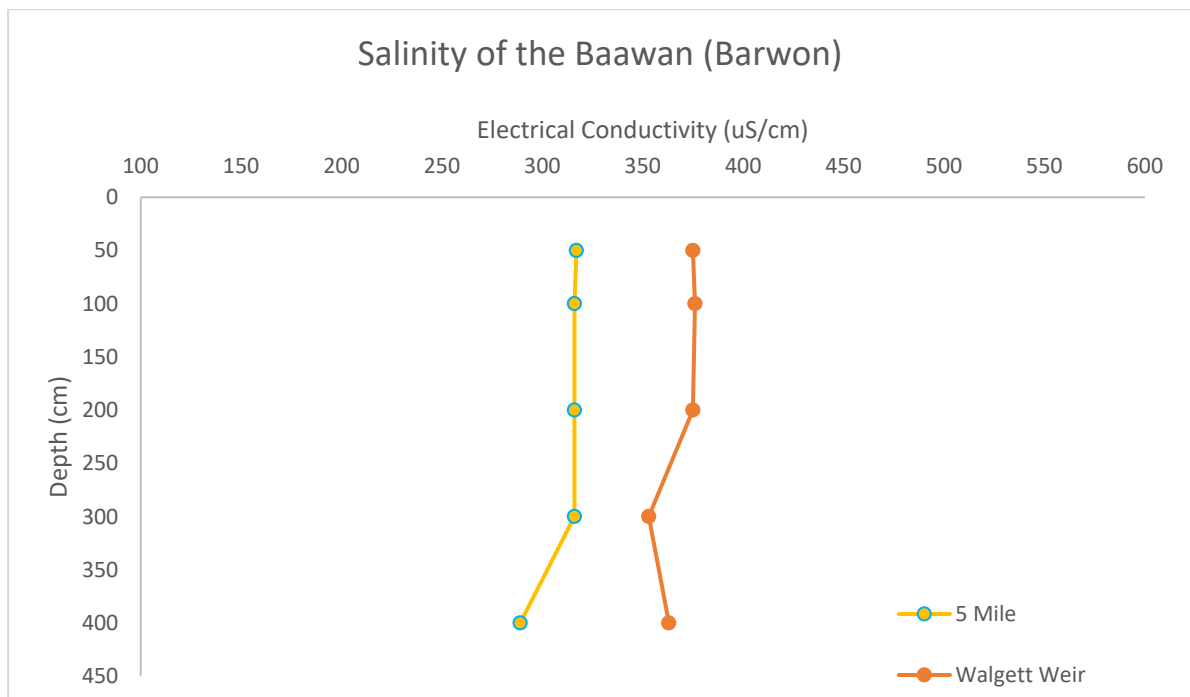
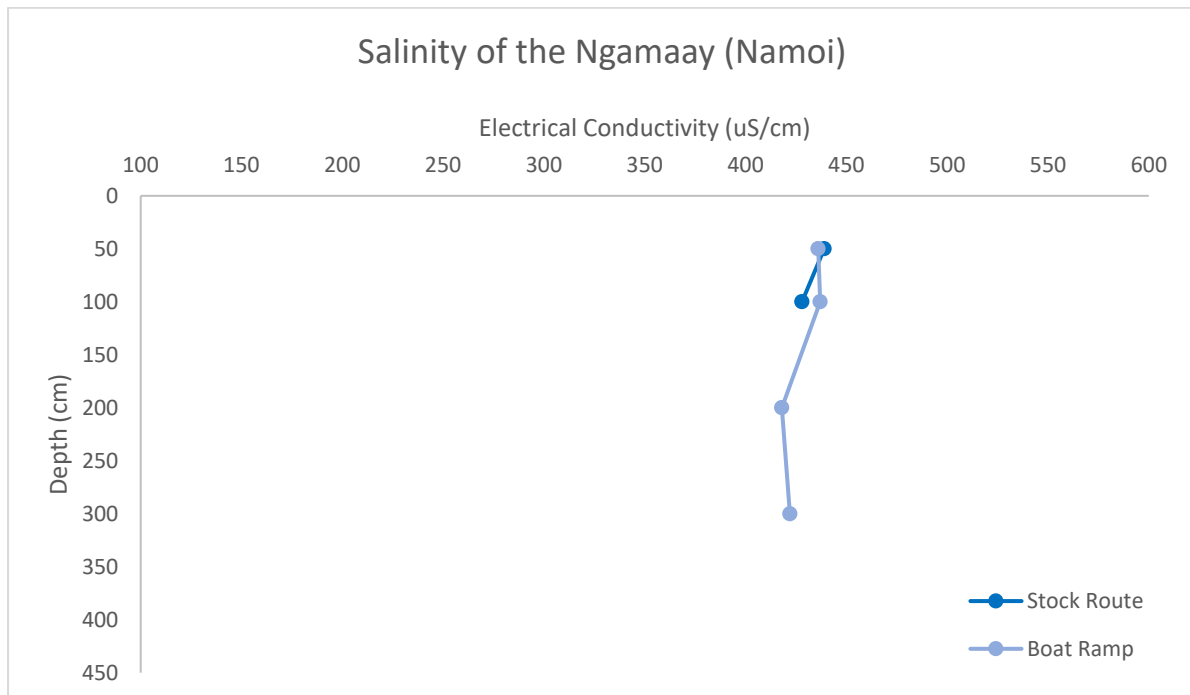
Dissolved Oxygen in the Ngamaay and Baawan Rivers



The dissolved oxygen readings in the Ngamaay and Baawan Rivers are within the healthy range at all depths. The minimum reading is 8.43 and the maximum reading is 9.43.

Healthy Range: 6 - 8 (Mg/L)

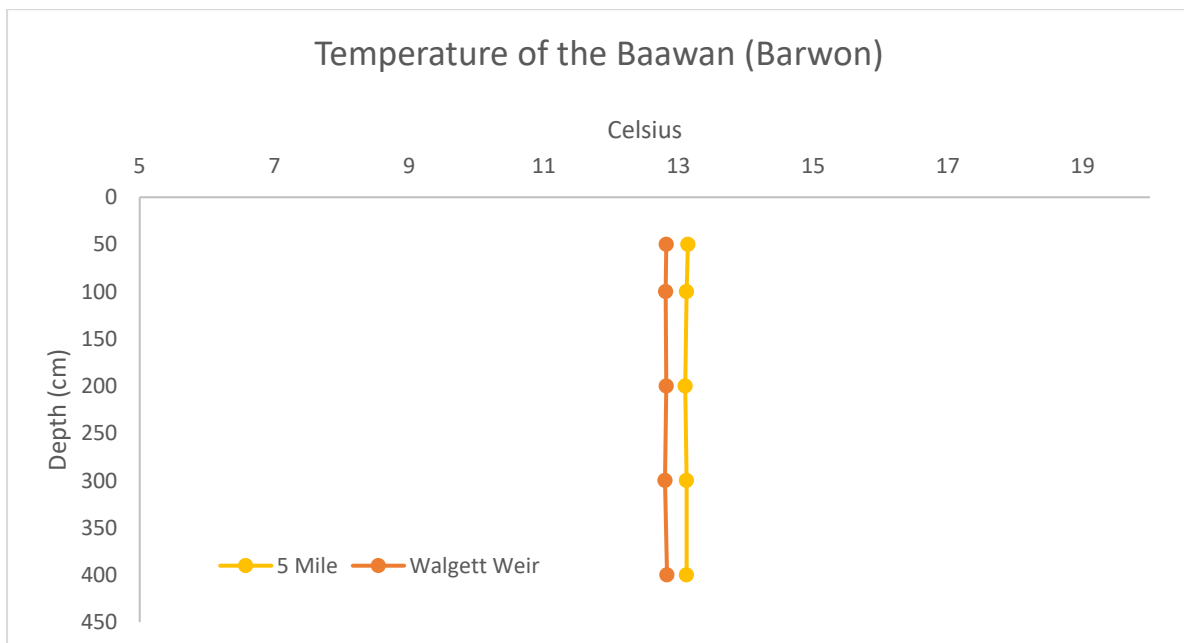
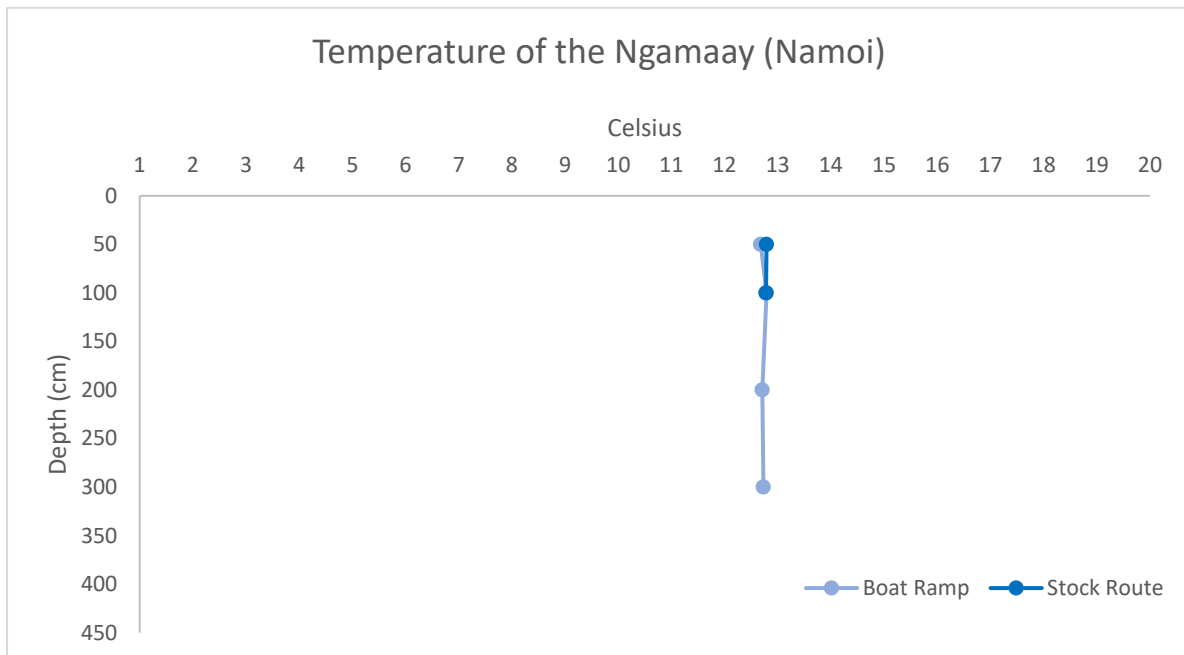
Salinity in the Ngamaay and Baawan Rivers



The electrical conductivity measured in the Ngamaay and Baawan Rivers are within the healthy range. The minimum reading is 289 and the maximum reading is 439.

Healthy Range: 125 - 2,200 uS/cm

Temperature in the Ngamaay and Baawan Rivers



The temperature measured on both the Ngamaay and Baawan Rivers are outside the healthy range.

Healthy Range: 18-28 degrees (Celsius)

Conclusion

The majority of pH readings on the Ngamaay and Baawan Rivers are within the healthy range. The last pH reading at the Walgett Weir is outside the healthy range on the alkaline side.

The dissolved oxygen and electrical conductivity levels are within the healthy range.

The temperature measured at all sites at all depths are outside the healthy range. There is no extreme danger to the fish within the rivers. The water is cold but it is typical for this time of year.