



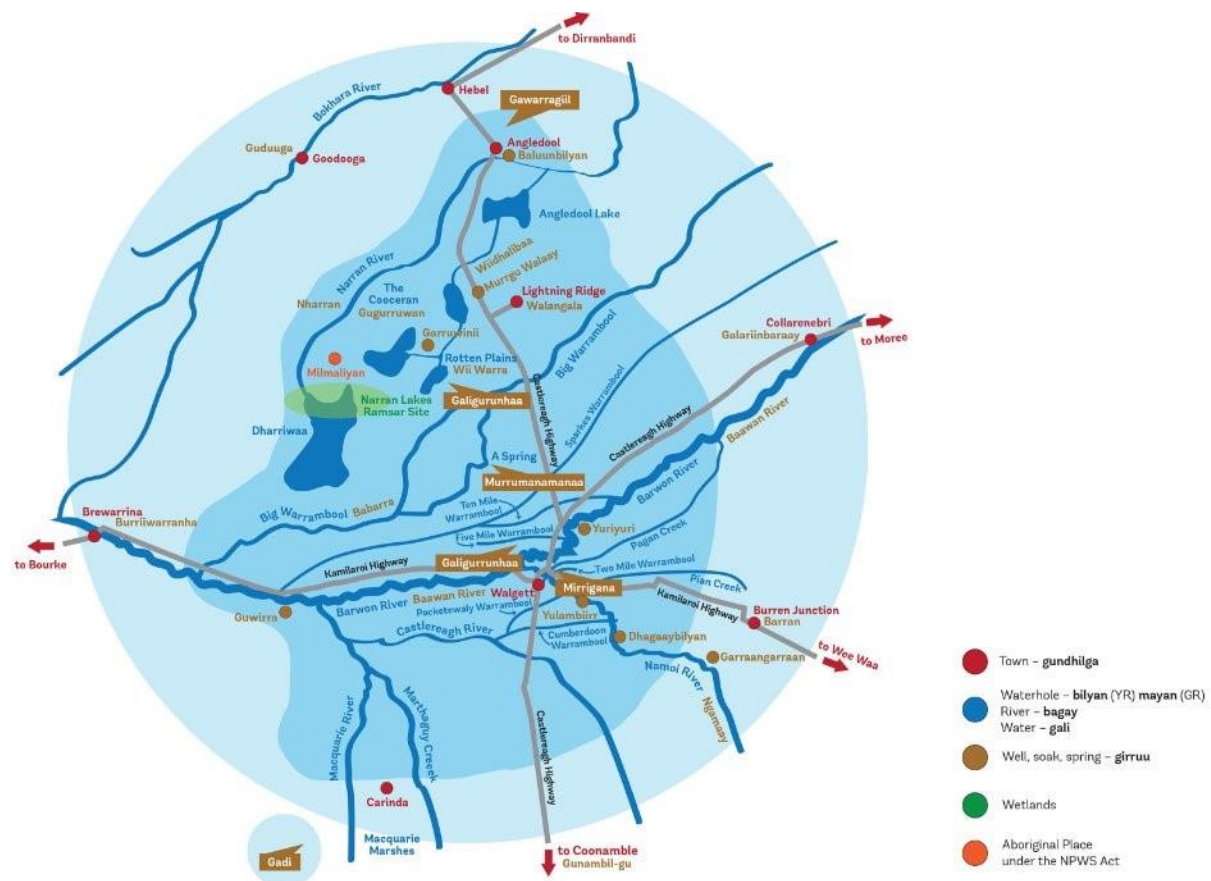
Weekly River Monitoring Report

10/06/2025

Introduction

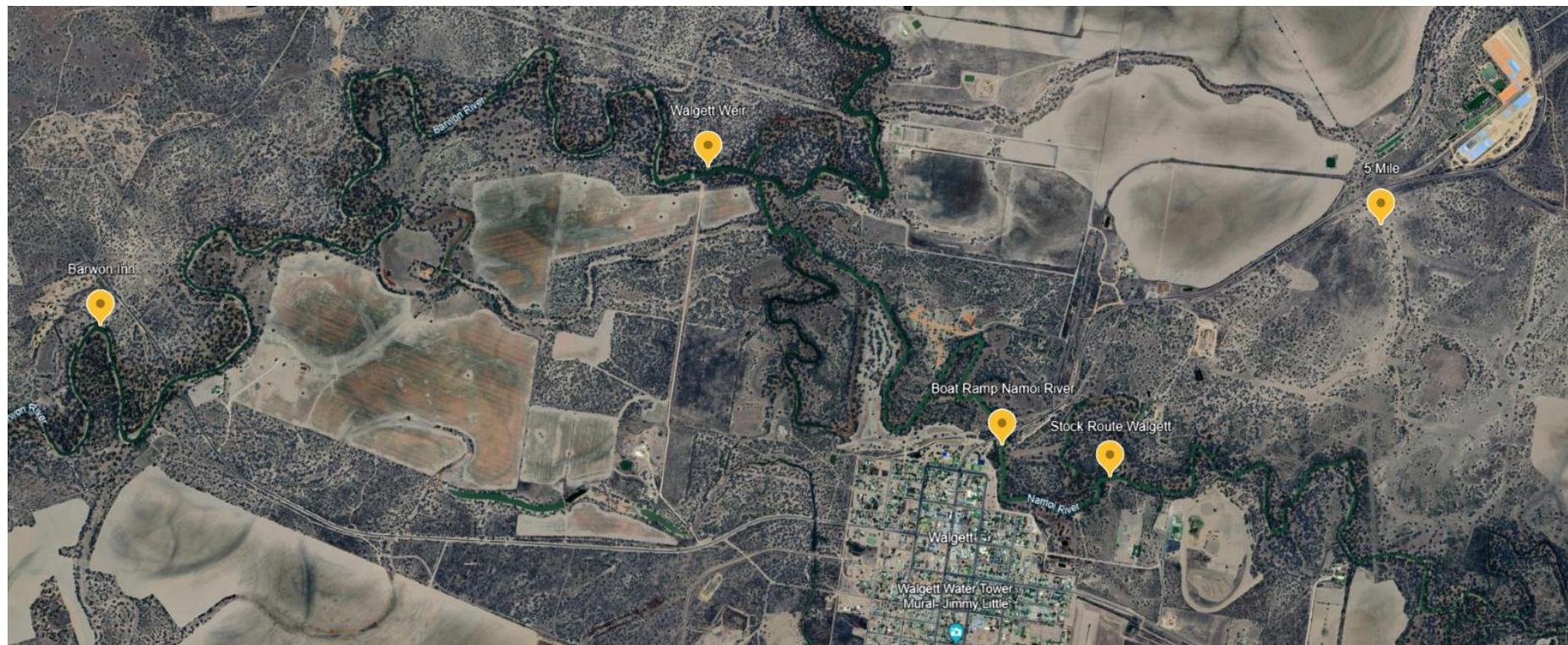
This data was collected on Tuesday 10th June between 10am and 1pm on the Ngamaay (Namoi) and Baawan (Barwon) Rivers.

The Dharriwaa Elders Group River Rangers are conducting weekly water quality testing, measuring a range of factors that affect the quality of the river water. Different results affect the health of native animals and plants, and the health of the people that rely on the river for food and water.

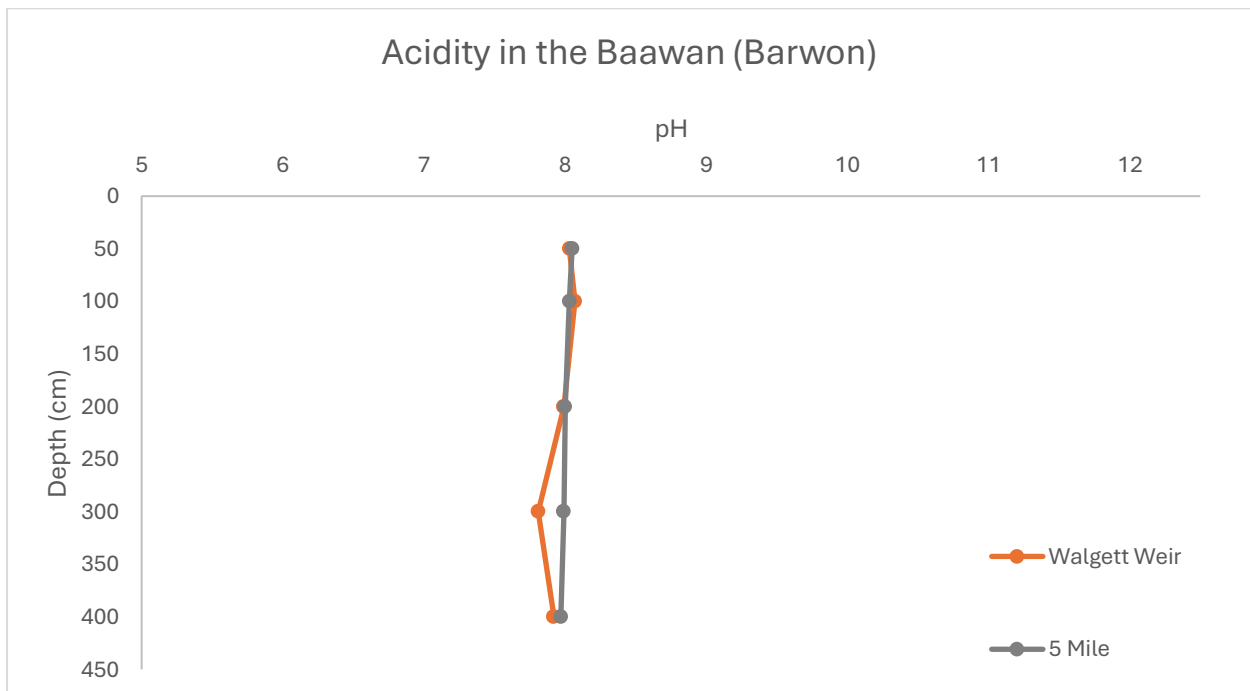
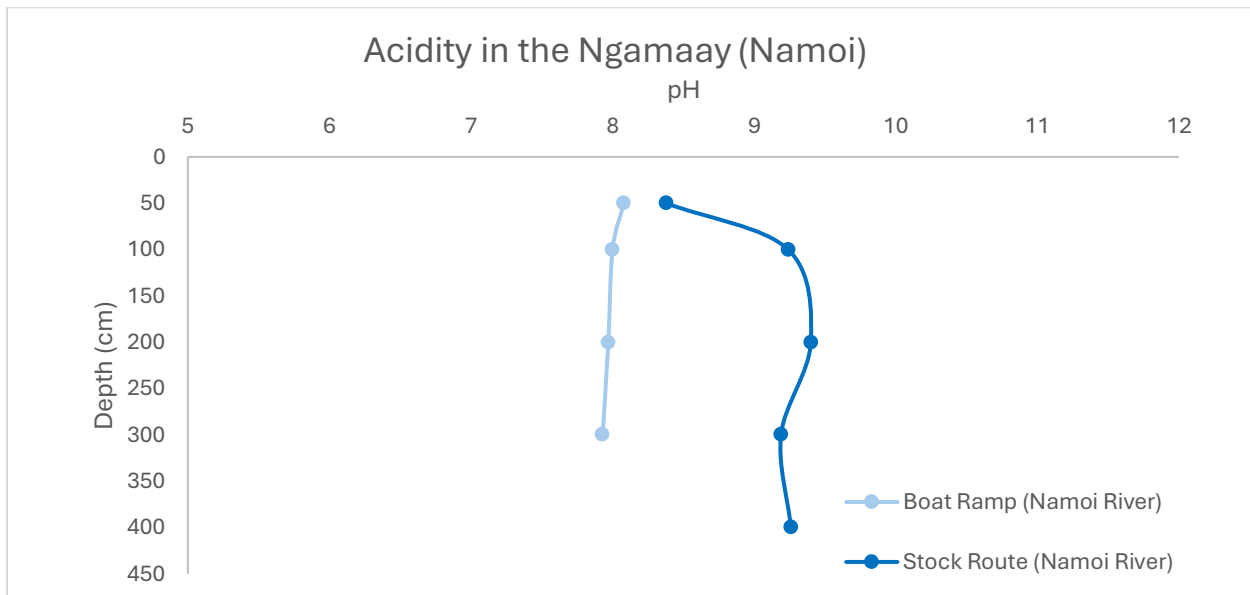


(Picture: Dharriwaa Elders Group area of interest)

Picture: Map of the Baawan (Barwon) River and Ngamaay (Namoi) River where the DEG River Rangers do their water quality monitoring.



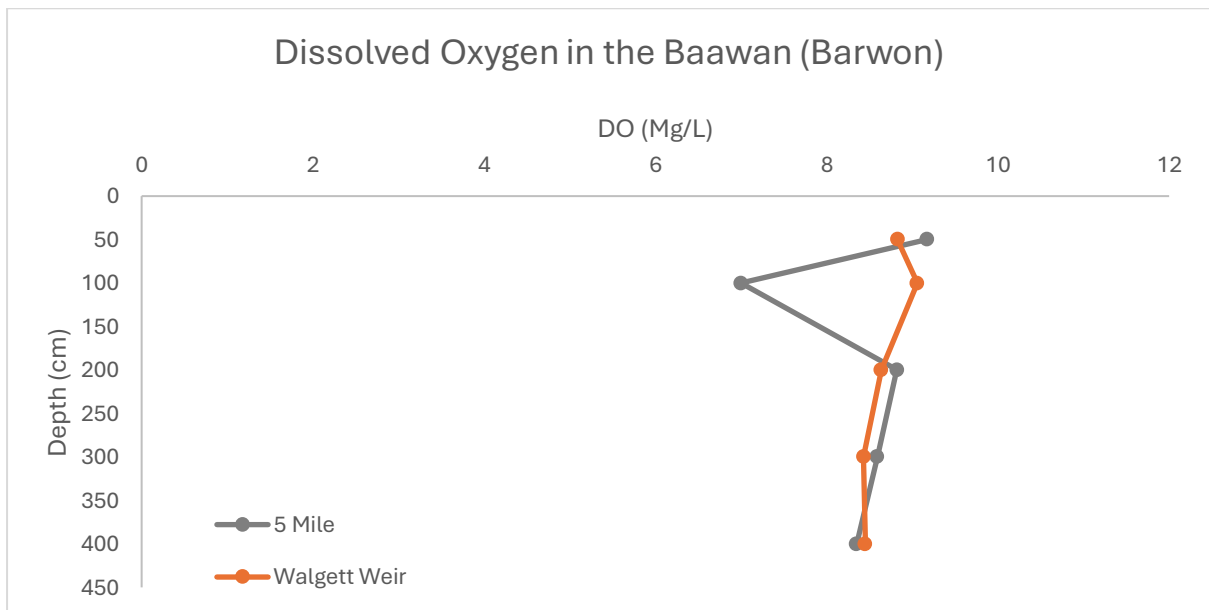
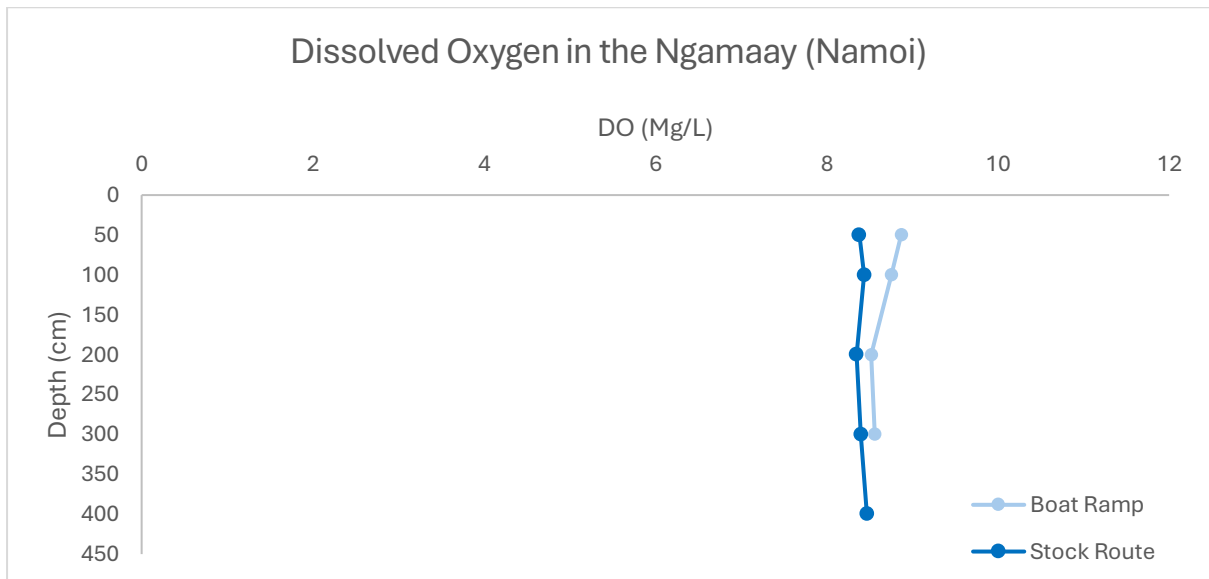
Acidity in the Ngamaay and Baawan Rivers



The pH in the Baawan is within the healthy range at all sites and depths. The pH in the Ngamaay is normal at all depths at Boat Ramp but is outside the healthy range at most depths at Stock Route. These levels should be monitored for next testing period. The minimum reading is 7.81 and the maximum reading is 9.4.

Healthy range: 6.5-8.5

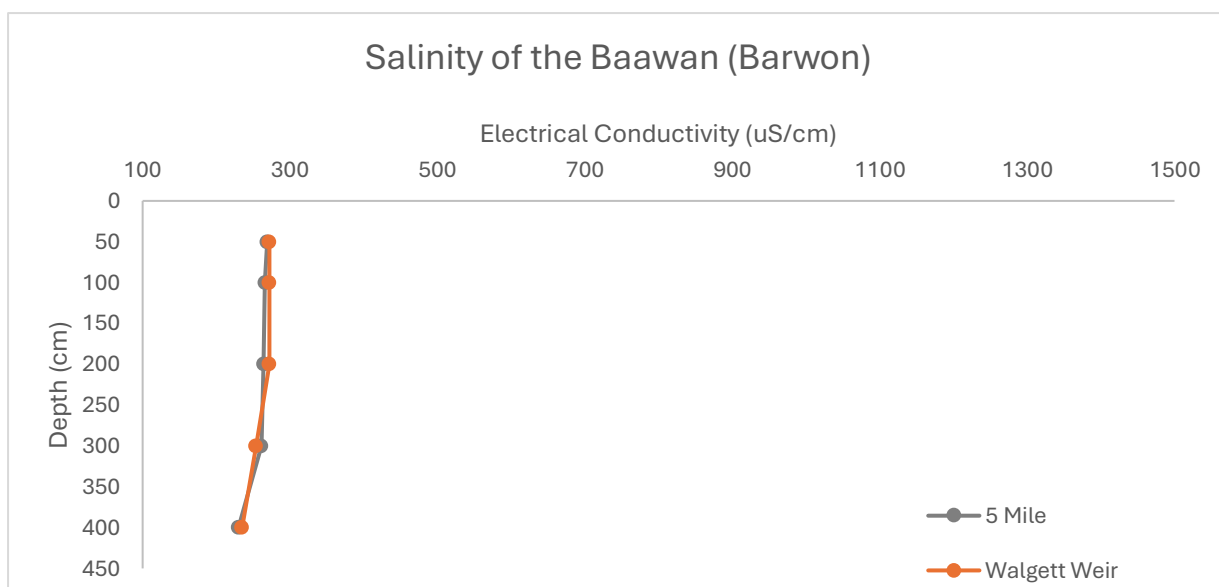
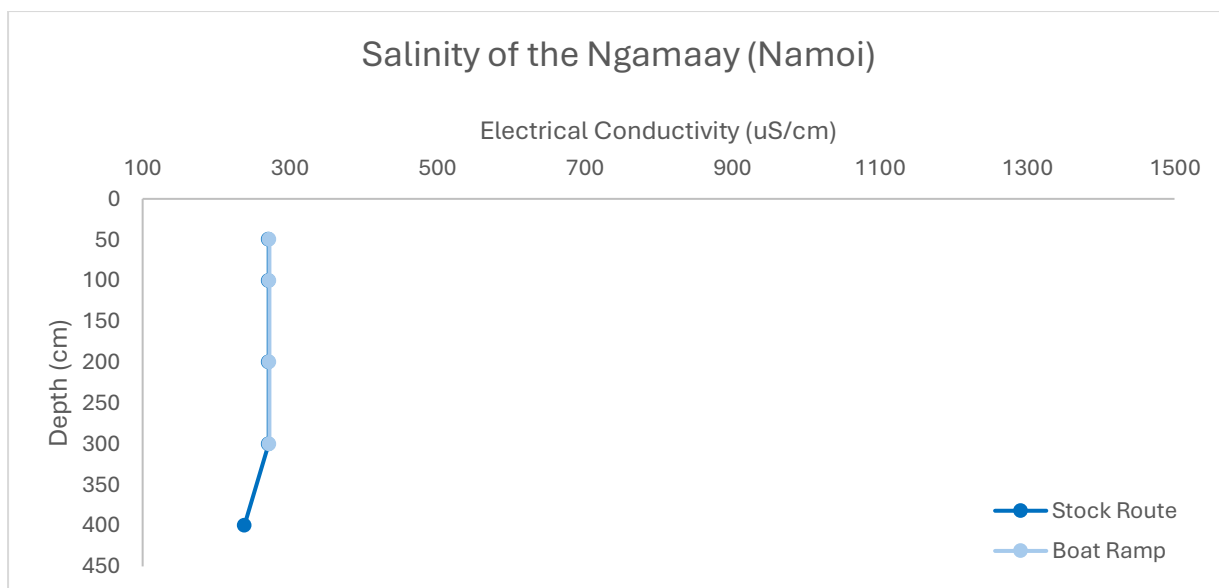
Dissolved Oxygen in the Ngamaay and Baawan Rivers



The dissolved oxygen levels in the Ngamaay and Baawan are slightly higher than the healthy range. Paired with the high pH in the Baawan, levels like this can indicate algal blooms, so they will be monitored along with the general appearance of the river. The minimum reading is 7 and the maximum reading is 9.17.

Healthy Range: 6 - 8 (Mg/L)

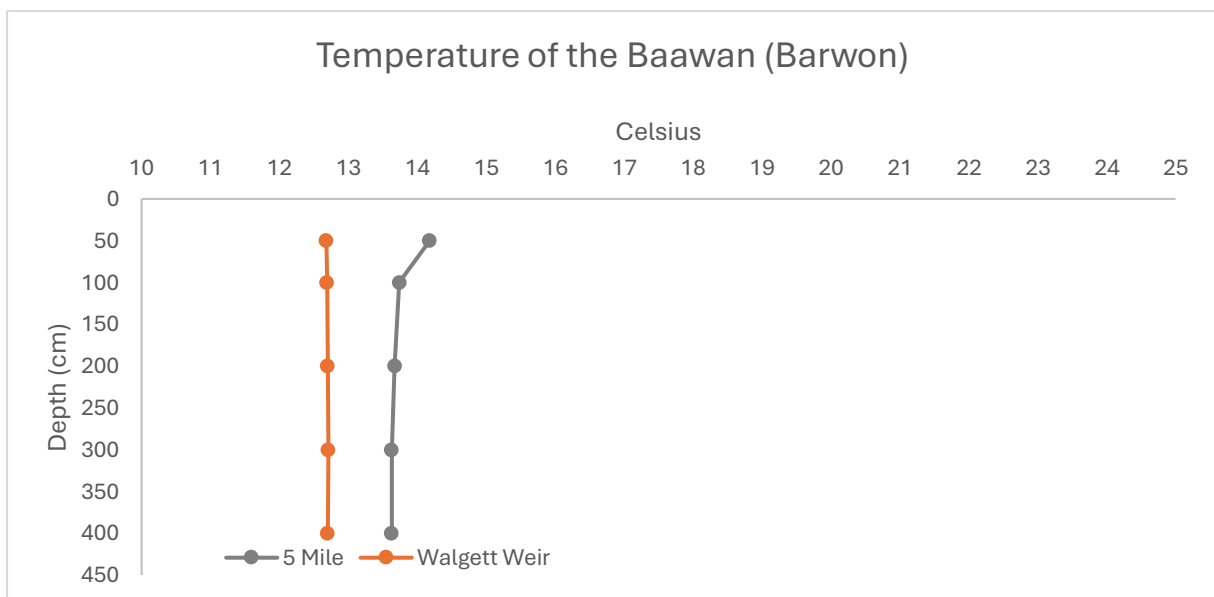
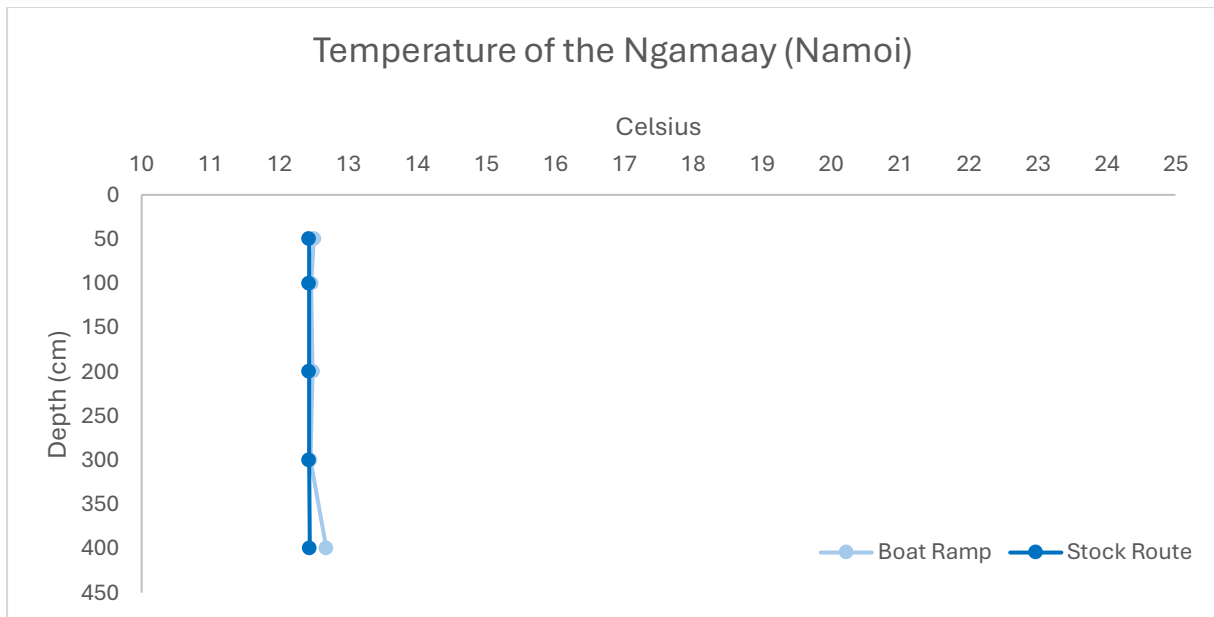
Salinity in the Ngamaay and Baawan Rivers



The salinity levels in both rivers are within the healthy range. The minimum reading is 230 and the maximum reading is 272.

Healthy Range: 125 - 2,200 uS/cm

Temperature in the Ngamaay and Baawan Rivers



The temperatures within both rivers are low but typical for the time of year the measurements were taken. The minimum reading is 12.43 and the maximum reading is 14.18.

Healthy Range: 18-28 degrees

Conclusion

The pH in the Ngamaay is within the healthy range at Boat Ramp but not at Stock Route. The pH in the Baawan is within the healthy range. The results in the Ngamaay should be monitored to make sure they go down.

The dissolved oxygen levels are higher than the healthy range in both rivers. This can sometimes indicate an algal bloom when combined with a high pH level. These results should be monitored and visual monitoring of the river will be performed to ensure that there is no sign of an algal bloom.

The salinity levels are normal in both rivers.

The temperatures are low in both rivers but this is typical for the time of year. A lower external temperature lowers the temperature of the water.